

Model VHCC

Foam concentrate hydraulic control valve

1" DN25 1 1/2" DN40 & 2" DN50



PRODUCT DESCRIPTION

The foam concentrate control valve model VHCC can be used in bladder tank foam systems or inline balance pressure proportioning system.

The medium to open this valve uses water as the medium to open the valve. A manual override facility is provided to open the valve. In normal condition the valve remain in closed position. When, a minimum water pressure of 2,1 bar (30 psi) is established the valve opens. Electric power is not required to operate the valve.

TECHNICAL DATA

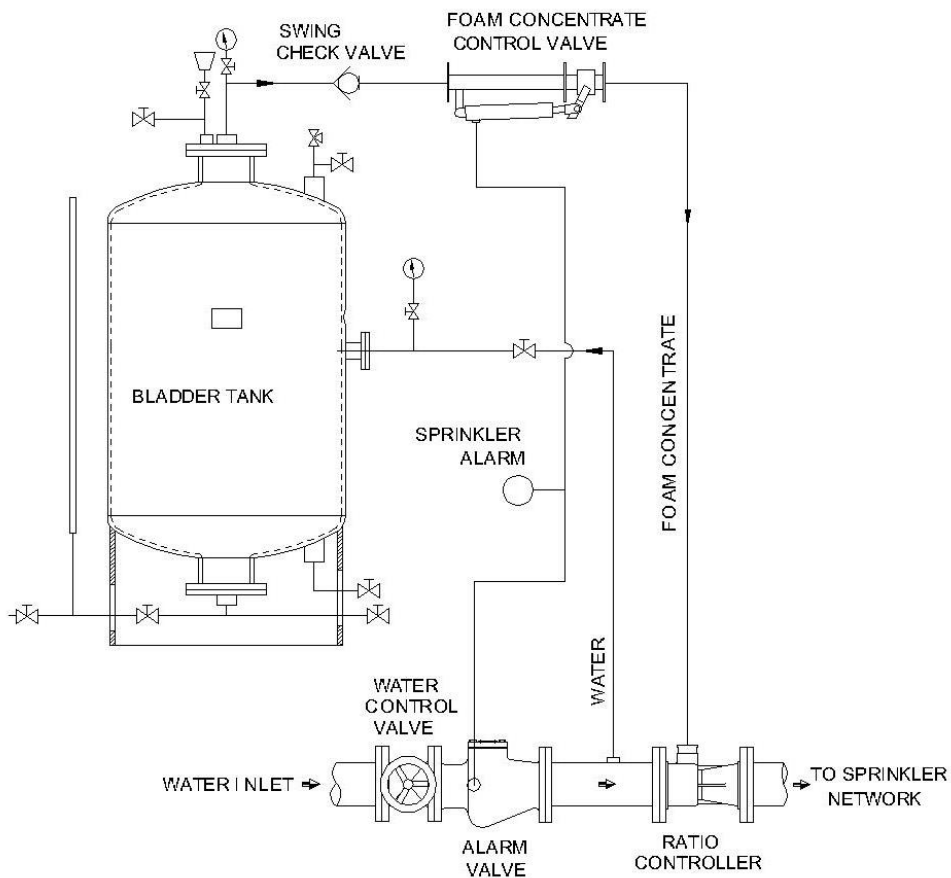
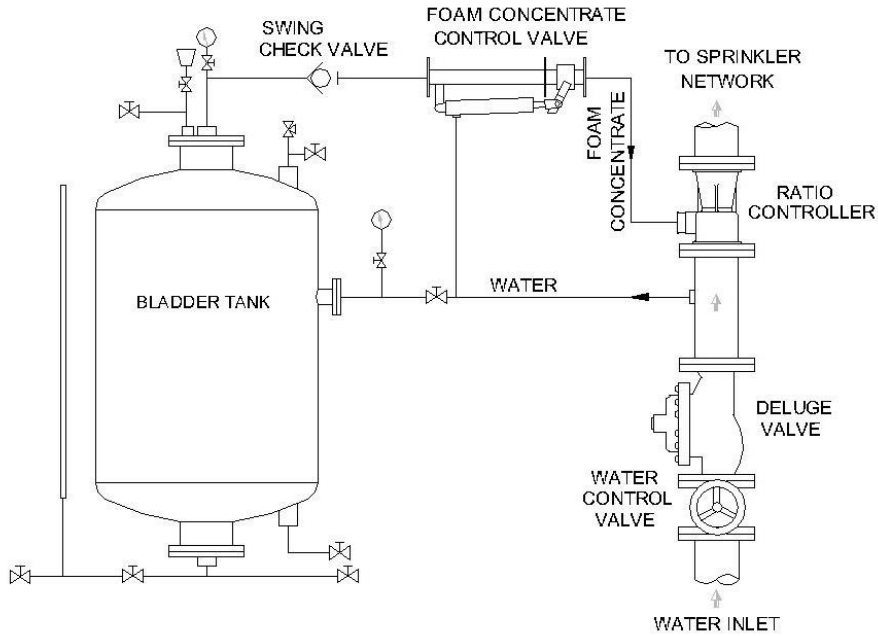
Models ⁽¹⁾	VHCC-025 VHCC-040 VHCC-050
Sizes	VHCC-025: 1" DN25 VHCC-040: 1 1/2" DN40 VHCC-050: 2" DN50
End connection	Inlet and outlet: Flanged to ANSI B 16.5 150 Lb RF
Working pressure	2,1 to 12,3 bar (30 to 175 psi)
Factory hydrostatically test	25 bar (365 psi)
Visual indicator	Closed: Red Open: Yellow
Materials	Body: Stainless Steel Trim connection: Brass or Stainless Steel Pressure sensing hose: Teflon tube with Stainless Steel braided cover
Finish	Red RAL 3000

(1). FM approved with model AG-TMIF bladder tank.

SELECTION OF FOAM CONCENTRATE CONTROL VALVE

RATIO CONTROLLER		FOAM CONCENTRATE CONTROL VALVE	
MODEL	SIZE	MODEL	SIZE
PCVI-065U & PCVB-065U	2 1/2" DN65	VHCC-040	1" DN25
PCVI-080U & PCVB-080U	3" DN80	VHCC-040	1 1/2" DN40
PCVI-100U & PCVB-100U	4" DN100	VHCC-040	1 1/2" DN40
PCVI-150U & PCVB-150U	6" DN150	VHCC-050	2" DN50

TYPICAL INSTALLATION OF FOAM CONCENTRATE CONTROL VALVE



INSTALLATION, TESTING AND MAINTENANCE

The hydraulic control valve must be installed, inspected and tested by a qualified and trained person. Installation must respect the flow direction indicated by an arrow on the body.

It must be inspected regularly for possible damage or dirt around the moving parts. If any abnormal conditions are observed such as poor discharge, excessive wear, water leak, corrosion effect, damage etc., the hydraulic control valve must be taken out of service and repaired by qualified technician or replaced.

Do not act on the valve before relieving the pressure in the water line and having isolated the foam concentrate supply line.

When removing for maintenance pay attention not to damage the connections and the lines. The owner is responsible for maintenance of the valve in proper operating condition.

ORDERING INFORMATION

SIZE	CODE
1" DN25	VHCC-025
1 ½" DN40	VHCC-040
2" DN50	VHCC-050

Specify:

Model	
Quantity	
Size	

AG FIRE SPRINKLER

AG Fire Sprinkler offers a wide selection of components. Then a list of products is presented by AG Fire Sprinkler, we can offer all these components, made with precision to protect people, anywhere, anytime.

- Sprinklers
 - Standard Coverage
 - Extended Coverage
 - Storage
 - Dry
 - Accessories
- System Valves
 - Wet
 - Dry
 - Preaction Equipment
 - Accessories
- Spray System Open Nozzles
 - High Velocity Nozzles
 - Medium Velocity Nozzles
 - Window Nozzles
 - Hydroshield Nozzles
 - Mushroom Type Nozzles
- Foam equipment
 - Tanks
 - Proportioners
 - Foam Discharge Equipment
 - Foam Concentrates
- Deluge equipment for Water Spray and Foam
 - Clapper Deluge Valves
 - Diaphragm Deluge Valves
- Monitors
 - Manual Monitors
 - Remote Monitors
 - Monitor Nozzles
 - Towers and Trolleys
- Valves
 - Butterfly Valves
 - Gate Valves
 - Check Valves
 - Pressure Control Valves
 - Test and Drain
 - Hose, Hydrant and Fire Connection Valves
 - Fire Department Connections

The equipment presented in this bulletin is to be installed in accordance with the latest published Standard of the National Fire Protection Association, Factory Mutual Research Corporation, or other similar organizations and also with the provisions of governmental codes or ordinances whenever applicable. This documentation is not contractual. AG Fire Sprinkler reserves the right to any kind of change without notice.
